

# Coaxial Band Stop Filter

## ZX75BS-100+

50Ω      90.365 to 109.635 MHz

### The Big Deal

- High rejection
- Stopband (90.365 to 109.635 MHz)
- Connectorized package



CASE STYLE: KD1465

### Product Overview

The ZX75BS-100+ is a band stop filter built in rugged and compact connectorized package. This filter offers good rejection in stopband. It has repeatable performance across lots and consistent performance across temperature. Useful in instrumentation system for industrial applications.

### Key Features

Feature	Advantages
High rejection	ZX75BS-100+ enables the filter to attenuate spurious signals without compromising pass band signal.
Connectorized package	The connectorized package is easy to interface with other devices and well suited for test setups
Application	Can be used in broadcast and FM systems.

#### Notes

- A. Performance and quality attributes and conditions not expressly stated in this specification document are intended to be excluded and do not form a part of this specification document.  
B. Electrical specifications and performance data contained in this specification document are based on Mini-Circuit's applicable established test performance criteria and measurement instructions.  
C. The parts covered by this specification document are subject to Mini-Circuits standard limited warranty and terms and conditions (collectively, "Standard Terms"); Purchasers of this part are entitled to the rights and benefits contained therein. For a full statement of the Standard Terms and the exclusive rights and remedies thereunder, please visit Mini-Circuits' website at [www.minicircuits.com/MCLStore/terms.jsp](http://www.minicircuits.com/MCLStore/terms.jsp)



# Band Stop Filter

## ZX75BS-100+

50Ω 90.365 to 109.635 MHz



CASE STYLE: KD1465

Connectors	Model
SMA-MF	ZX75BS-100-S+

### Features

- High rejection
- Fast roll-off
- Connectorized package

### Applications

- FM radio
- Broadcast systems
- Lab use

### Electrical Specifications at 25°C

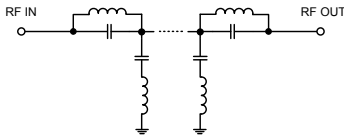
Parameter	F#	Frequency (MHz)	Min.	Typ.	Max.	Unit	
Pass Band, Lower	Insertion Loss	DC-F1	DC - 70	-	0.6	1.5	dB
	VSWR	DC-F1	DC - 70	-	1.2	1.6	:1
Stop Band	Rejection	F4-F5	90.365 - 109.635	30	46	-	dB
	VSWR	F4-F5	90.365 - 109.635	-	14	-	:1
Pass Band, Upper	Insertion Loss	F2-F3	146 - 1000	-	0.7	1.5	dB
	VSWR	F2-F3	146 - 1000	-	1.3	1.7	:1

### Maximum Ratings

Operating Temperature	-40°C to 85°C
Storage Temperature	-55°C to 100°C
RF Power Input	250 mW max.

Permanent damage may occur if any of these limits are exceeded.

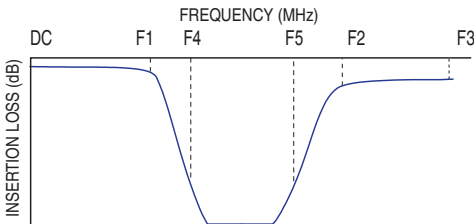
### Functional Schematic



### Typical Performance Data at 25°C

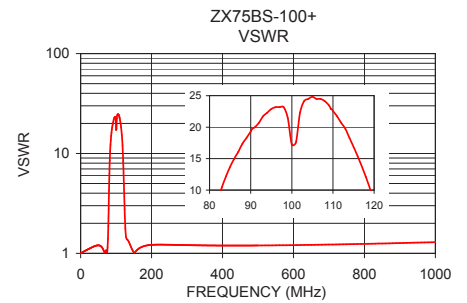
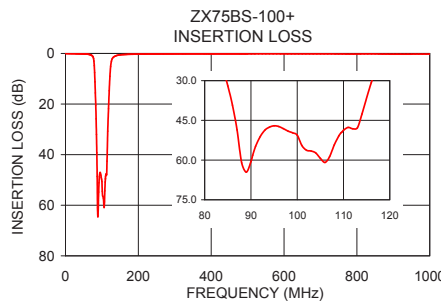
Frequency (MHz)	Insertion Loss (dB)	VSWR (:1)
-1.000	0.02	1.01
50.000	0.19	1.20
62.000	0.32	1.12
70.000	0.61	1.05
76.000	1.51	1.15
78.000	3.02	1.88
80.000	7.56	4.26
82.000	15.59	8.43
85.000	32.02	13.70
88.000	61.04	17.39
90.365	58.26	19.76
100.000	50.58	17.22
109.635	49.50	22.87
113.000	47.81	19.76
118.000	21.87	12.09
122.000	9.03	4.95
126.000	3.07	1.78
146.000	0.63	1.08
500.000	0.19	1.20
1000.000	0.26	1.29

### Typical Frequency Response



### +RoHS Compliant

The +Suffix identifies RoHS Compliance. See our web site for RoHS Compliance methodologies and qualifications



### Notes

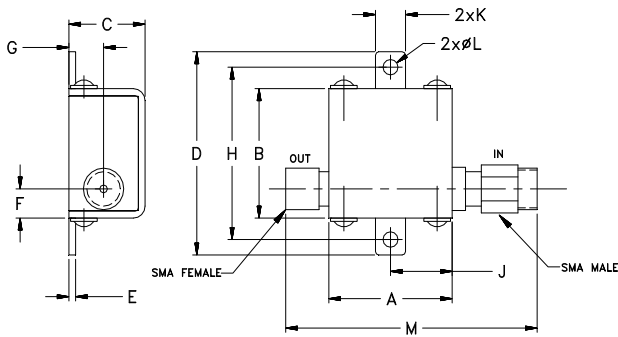
- Performance and quality attributes and conditions not expressly stated in this specification document are intended to be excluded and do not form a part of this specification document.
- Electrical specifications and performance data contained in this specification document are based on Mini-Circuit's applicable established test performance criteria and measurement instructions.
- The parts covered by this specification document are subject to Mini-Circuits standard limited warranty and terms and conditions (collectively, "Standard Terms"); Purchasers of this part are entitled to the rights and benefits contained therein. For a full statement of the Standard Terms and the exclusive rights and remedies thereunder, please visit Mini-Circuits' website at [www.minicircuits.com/MCLStore/terms.jsp](http://www.minicircuits.com/MCLStore/terms.jsp)



## Coaxial Connections

INPUT	SMA-Male
OUTPUT	SMA-Female

## Outline Drawing



## Outline Dimensions ( $\frac{\text{inch}}{\text{mm}}$ )

A	B	C	D	E	F		
.74	.75	.46	1.18	.04	.17		
18.80	19.05	11.68	29.97	1.02	4.32		
G	H	J	K	L	M	wt.	
.21	1.00	.37	.18	.09	1.51	grams	
5.33	25.40	9.40	4.57	2.29	38.4		21.4

### Notes

- A. Performance and quality attributes and conditions not expressly stated in this specification document are intended to be excluded and do not form a part of this specification document.
- B. Electrical specifications and performance data contained in this specification document are based on Mini-Circuit's applicable established test performance criteria and measurement instructions.
- C. The parts covered by this specification document are subject to Mini-Circuits standard limited warranty and terms and conditions (collectively, "Standard Terms"); Purchasers of this part are entitled to the rights and benefits contained therein. For a full statement of the Standard Terms and the exclusive rights and remedies thereunder, please visit Mini-Circuits' website at [www.minicircuits.com/MCLStore/terms.jsp](http://www.minicircuits.com/MCLStore/terms.jsp)